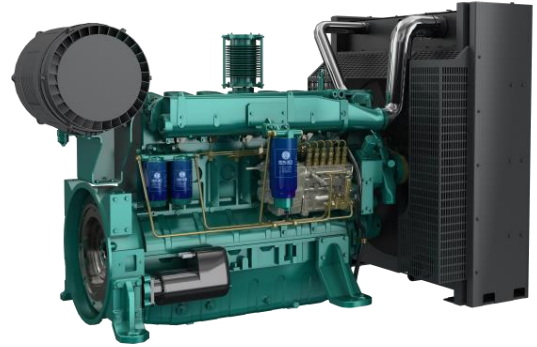


## G-Drive Engine WP12 Series

### General Specifications

Bore & Stroke	126x155 mm
Displacement	11.596 L
Cylinder Number	6
Compression Ratio	17:1
Fuel System	Mechanical Pump
Governor Method	Mechanic/Electronic
Aspiration	TA
Emission Standard	EU Stage II



Engine Speed	Engine Output		Typical Generator Output
	Prime (PRP)	Standby (ESP)	
RPM	kW	kW	kWe/kVA
1500	288	317	250/312.5

Engine Speed	Engine Output		Typical Generator Output
	Prime (PRP)	Standby (ESP)	
RPM	kW	kW	kWe/kVA
1800	288	317	250/312.5

### Standard Equipment

#### Engine and block

- Cast iron frame style body structure
- One-piece forged crankshaft
- Aluminium alloy pistons with oil cooling gallery
- Separate cast iron cylinder heads and replaceable dry cylinder liners

#### Cooling system

- Radiator and hoses supplied separately
- Thermostatically-controlled system with poly belt driven coolant pump and pusher fan

#### Lubrication system

- Flat bottom large capacity oil pan (24 L)
- Spin-on full-flow lub oil filter
- High capacity gear driven lube oil pump

#### Fuel system

- P type fuel injection pump and injector for higher inject pressure
- Duplex fine filter and water separated filter assembly with transparent cup

#### Air intake and exhaust system

- Mid-position and below inlet turbocharger optimized for industrial application
- Special rear mounted air filter with restriction indicator
- Silicone tubes and strong clips for pipe connecting
- Stainless steel exhaust manifold shield for heat isolating

#### Electrical system

- 24V electric starter motor and battery charging alternator

#### Flywheel and housing

- SAE1 flywheel housing and 11.5/14" flywheel

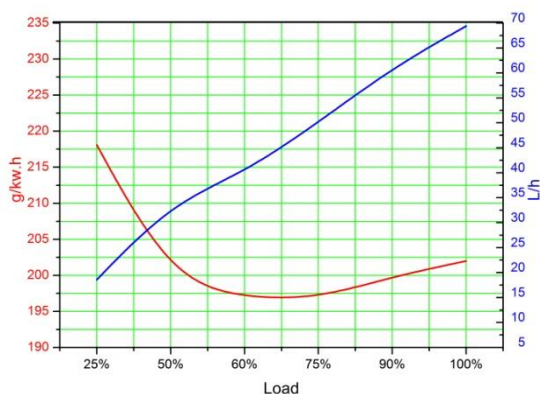
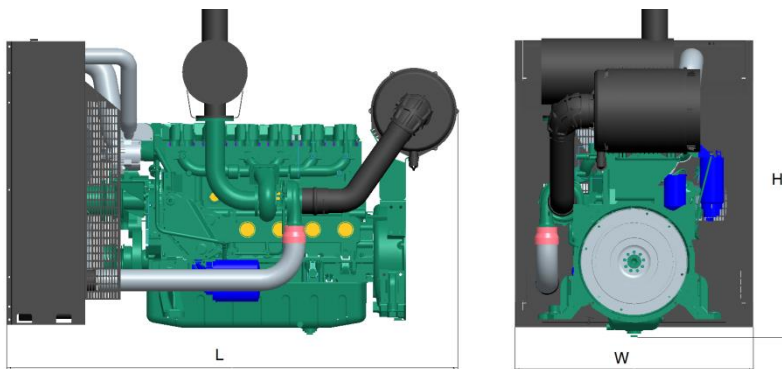
### Optional Equipment

- Radiator for tropical environment (50°C)
- Shutoff solenoid mounted on the fuel pump
- Air heater for cold start
- Manual drawing off oil pump
- Immersion heater with thermostat
- Tool Kits

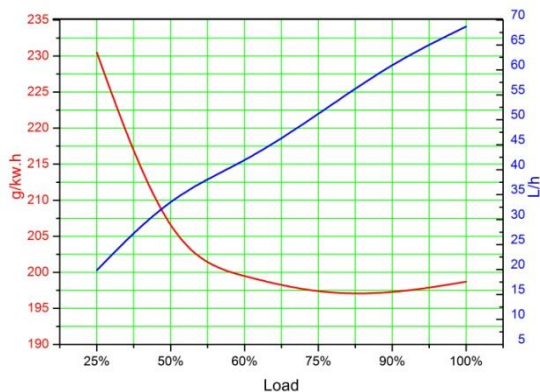
	Continuous Power (COP)	Prime Power (PRP)	Standby Power (ESP)
Mean engine load factor	100%	≤ 70% per 250 h	≤ 80% per 24 h
Annual working time	Unlimited	Unlimited	≤ 200 h
Time at full load	Unlimited (Max. Load ≤ 0.85 PRP)	≤ 500 h per year	≤ 25 h per year
Overload capacity	No	1 h per 12 h (10% overload)	No

## Dimensions and Weight

Length	2069 mm
Width	1085 mm
Height	1539 mm
Weight	905 kg



WP12D317E200-288kW/1500rpm



WP12D317E201-288kW/1800rpm

### Powerdefinition

Standard ISO 3046/1 -1995(F)

### Reference conditions

Ambiant temperature 25°C

Barometric pressure 100kPa

Relative humidity 30%

### Fuel

Relativedensity 0.840±0.005

Lower calorific power 42 700 kJ/kg

Consumption tolerances ± 5 %

### Lube oil

Recommend grade CF 15W/40